

# Installation Instructions & Use Recommendations

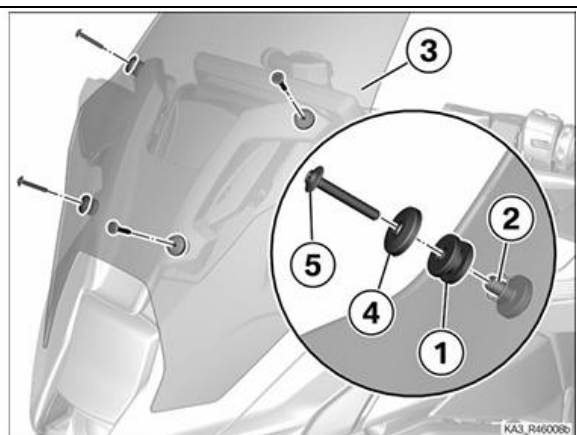
## Radar Display Dashboard for R 1300 RT-P (KA3)

These instructions must be read carefully and thoroughly **before** beginning work. FMS Solutions, LLC accepts no liability for damage caused by failure to observe the installation instructions or use recommendations. **Installation of this accessory does not change the factory specified load limits for saddlebags or radio box.**

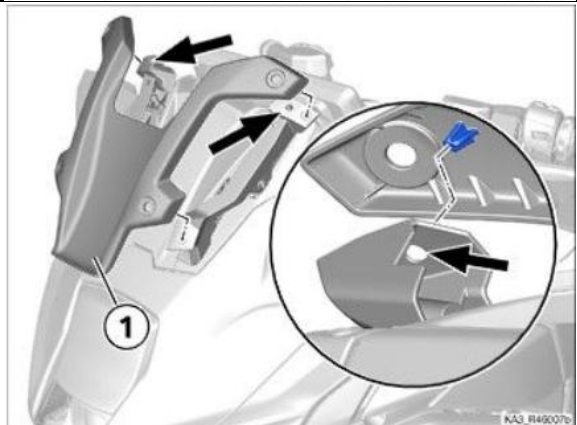


Remove windshield to gain access to the central dashboard panel.

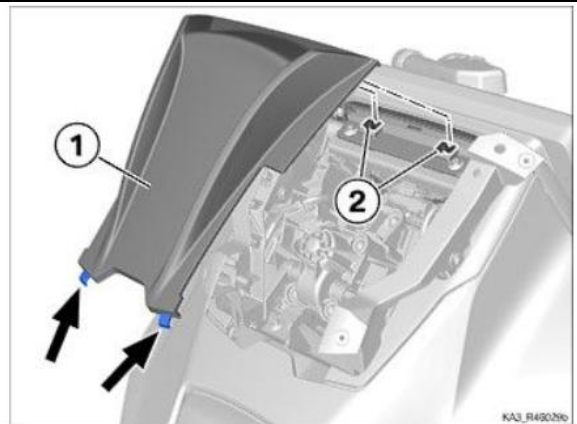
- Remove screws (1) and remove windscreen (2).
- Note bushes (3) and grommets (4).



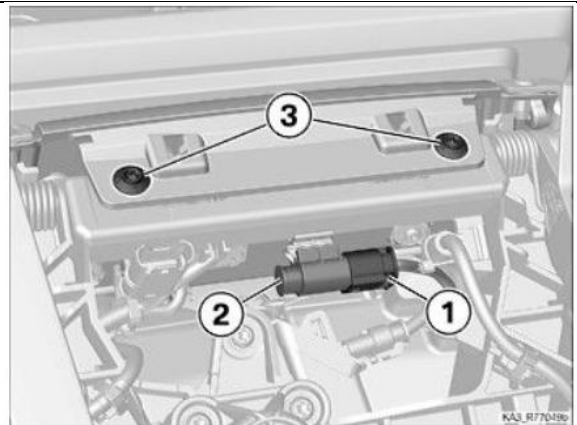
- Remove brace (1), while paying attention to hook (arrows).



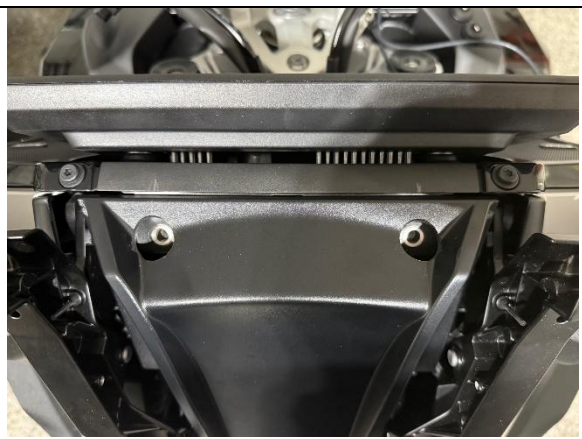
The panel snaps into place with clips on the upper area, with engagement feet at the bottom.



Remove the two T30 M6 bolts. This is the mounting location for the dashboard mount.



Using a Uni-Bit + shopvac, drill through the plastic. The OD of the bushing is 16mm or 5/8". Start small and verify if you are over the threaded bolt hole. Remove cover to finish hole size. This is just plastic, so if you are off a little, push the direction to get the drill back on center.



Place the M6 x 50 bolts through the radar display mount, then slide the 25mm spacers on to the bolts, then install into the holes. There are M6 clip nuts below to secure the dashboard. Tighten snugly (4 Nm).



Install the radar display to the dashboard using the screws provided by the radar company for the installation.

The height of the display allows for the use of TFT dashboard sun shade option if desired by customer.



Reattach windshield brace and windshield in reverse order. Snug M5 windshield screws to 2 Nm.

**Feedback:** Thank you for your purchase and we welcome your feedback as we too want to make every accessory exceed your expectations. Report any comments, suggestions, problems or concerns to FMS Solutions, LLC at [info@fmsaccessories.com](mailto:info@fmsaccessories.com).

Thank you!